

PERI UP MD (PS100) **100kN Shoring System**

Product Brochure – Issue 07/2025





CONTENTS



4 **General Information**



8 **Project References**



14 **Component Catalogue**

PERI Asia Pte Ltd **Formwork Scaffolding Engineering**

No. 1 Sims Lane
#04-12

Singapore 387355
Tel. +65 6744 2989

info@periasia.com
www.periasia.com

Issue 07/2025

Important Notes

All current safety regulations and guidelines must be observed.

The photos shown in this brochure feature construction sites in progress. For this reason, safety and anchor details in particular cannot always be considered as conclusive or final. These are subject to the risk assessment carried out by the contractor.

In addition, computer graphics are used which are to be understood as system representations. For ensuring a better understanding, these and the detailed illustration shown have been partially reduced to certain aspects. The safety installations which have possibly not been shown in these detailed descriptions must nevertheless be available.

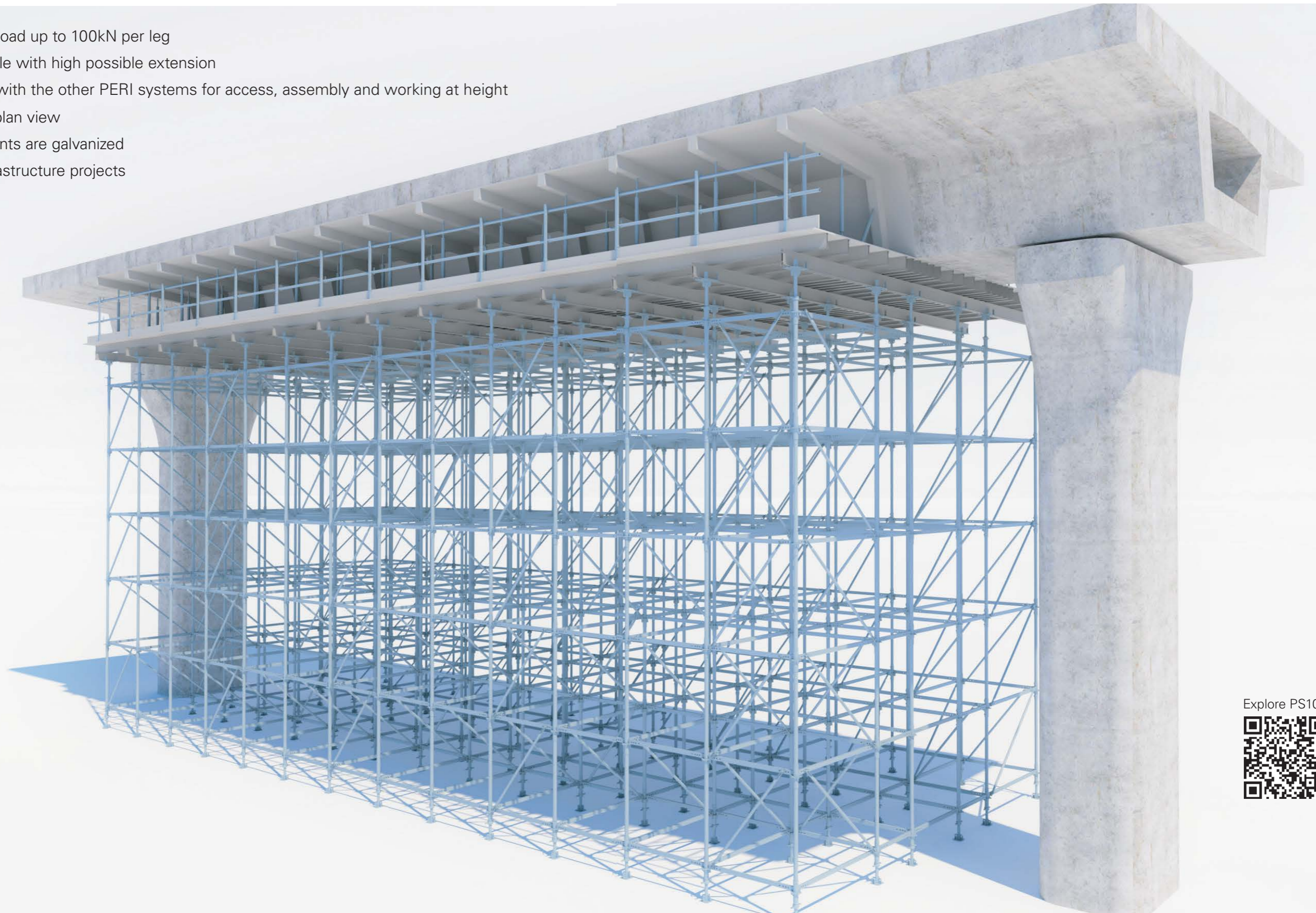
Safety instructions and load specifications are to be strictly observed at all times. Separate structural calculations are required in case of changes and deviations.

The information contained herein is subject to technical changes in the interests of progress. Errors and typographical mistakes reserved.

PERI UP MD

Stable and flexible shoring system with a high load-bearing capacity

- Permissible load up to 100kN per leg
- Strong spindle with high possible extension
- Compatible with the other PERI systems for access, assembly and working at height
- Adaptive in plan view
- All components are galvanized
- Ideal for infrastructure projects



Explore PS100



PERI UP MD

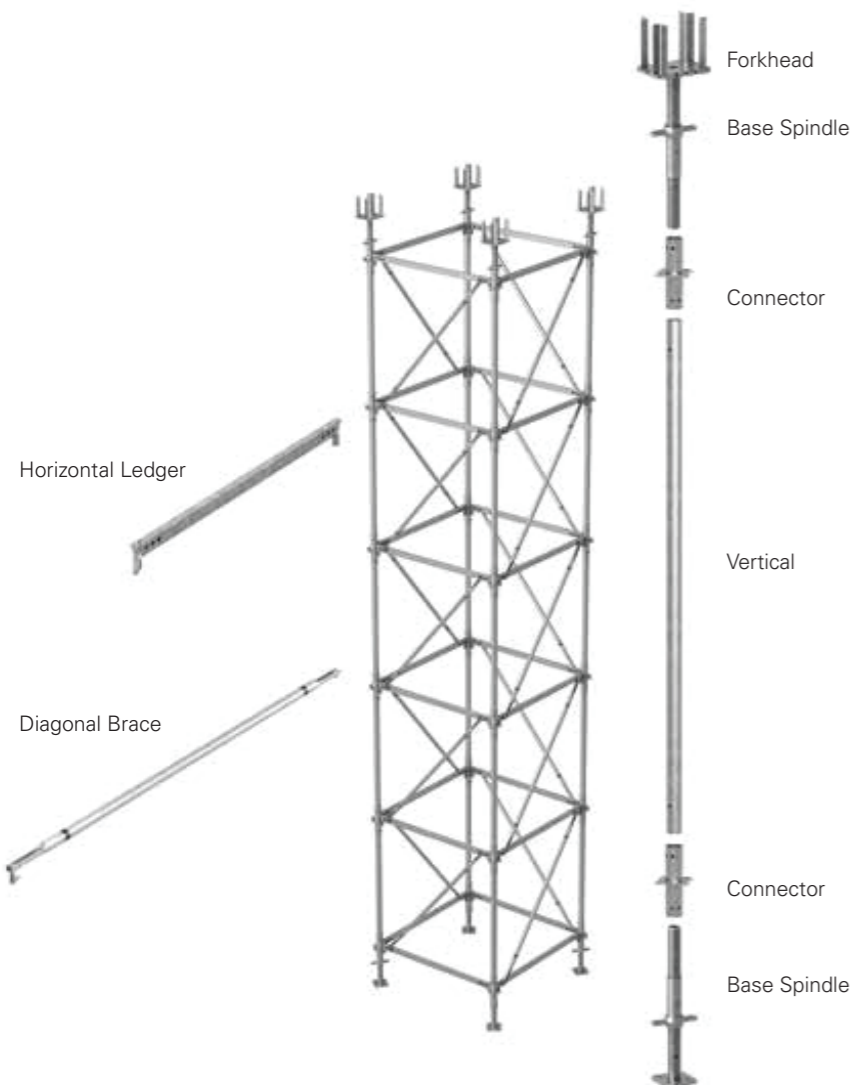
Product Features



PERI UP MD is a versatile medium-duty shoring system designed specifically for infrastructure projects and building construction with thick slabs. The system's modular and flexible design, featuring Gravity Lock Technology, ensures simple and safe assembly.

Designed to provide up to 100 kN of load-bearing capacity per leg, PERI UP MD excels in both strength and stability. The simple assembly process, requiring a low number of components, enhances efficiency and cost-effectiveness on site.

The small number of lightweight components enables you to assemble and dismantle the shoring tower quickly, safely and ergonomically. This streamlined approach not only speeds up the construction process but also reduces labour costs and the need for extensive on-site training.



The system includes the innovative Connector MD, verticals and PERI UP ledgers and braces, supplemented with cross head and base spindles for continuous height adjustments.

Thanks to its modular design and low number of system components, minimal storage space is required. At the same time, PERI UP MD can be easily adapted to different building geometries and a wide range of applications.

Product Highlights



High leg load-bearing capacity of up to 100 kN/leg (according to EN 12812) leads to high efficiency

The small number of system components, innovative design and repetitive assembly steps facilitate rapid and efficient working operations

Safe and easy installation through self-locking ledgers, optional ladder integration, lightweight individual parts and intuitive use

Lower logistical footprint and less material required due to modularity and adaptable ledger length

Flexible adaptability in ground plan (1.022 m – 3.022 m) and continuous height adjustment with verticals (1.0 m, 1.5 m, 2.0 m) and spindles

Compatibility with PERI UP enables integration in additional applications such as access solutions, ensuring high material utilization

Easy cleaning and maintenance procedures due to robust design and galvanised parts



Three functions combined in a single component

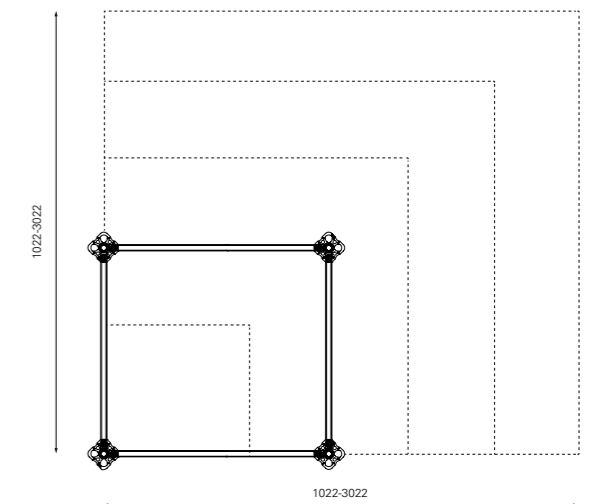
The Connector MD serves as a versatile element, integrating a base, spigot and nodal connection ring into a single piece.

The PERI UP node design enables straightforward integration of PERI UP ledgers and diagonals, enhancing efficiency and simplicity during assembly.



Effortless and safe assembly using Gravity Lock Technology

When inserting the ledger into the Connector MD, the wedge drops automatically through gravitational force and secures the connection rigidly. This mechanism enables ledgers to be installed with ease from a safe position and therefore improves efficiency and worker safety on site.



Modular system with optimal adaptability

Verticals are available for heights of 1.0m, 1.5m and 2m. Ground plan dimensions ranges from 1.022m to 3.022m in 25cm and 50cm increments. It can be used as a single shoring tower, or additional shoring frame.

PERI UP MD

Project References



Heavy-vehicle Factory at Jalan Papan, Singapore



RedLion 2, Singapore



PSA Tuas, Singapore



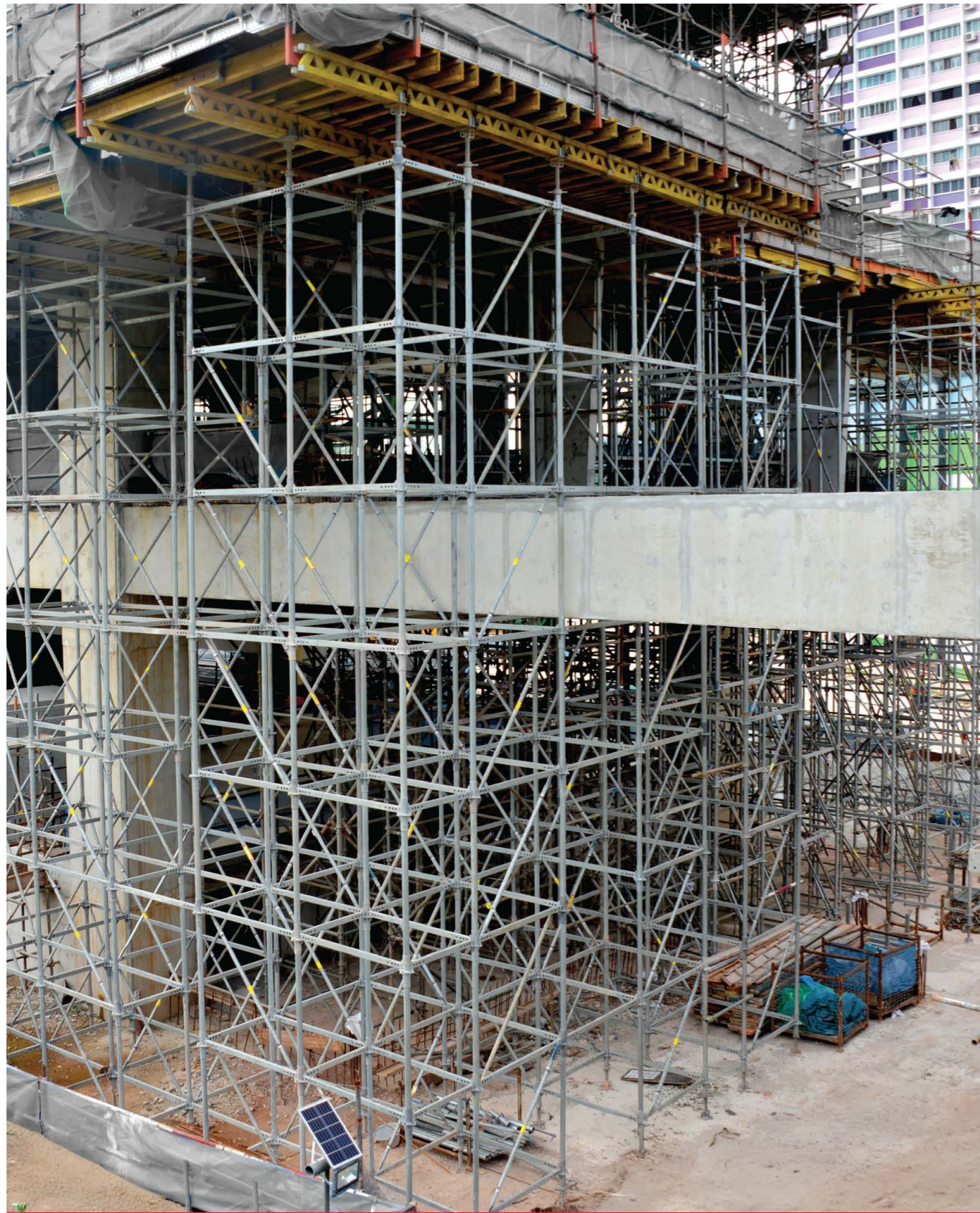
VSMC, Singapore



Semi-Conductor Expansion (AMK), Singapore

PERI UP MD

Project References



J108 JRL, Singapore



Metrohub 4, Malaysia



National Disease Control Center, Malaysia

PERI UP MD

Project References



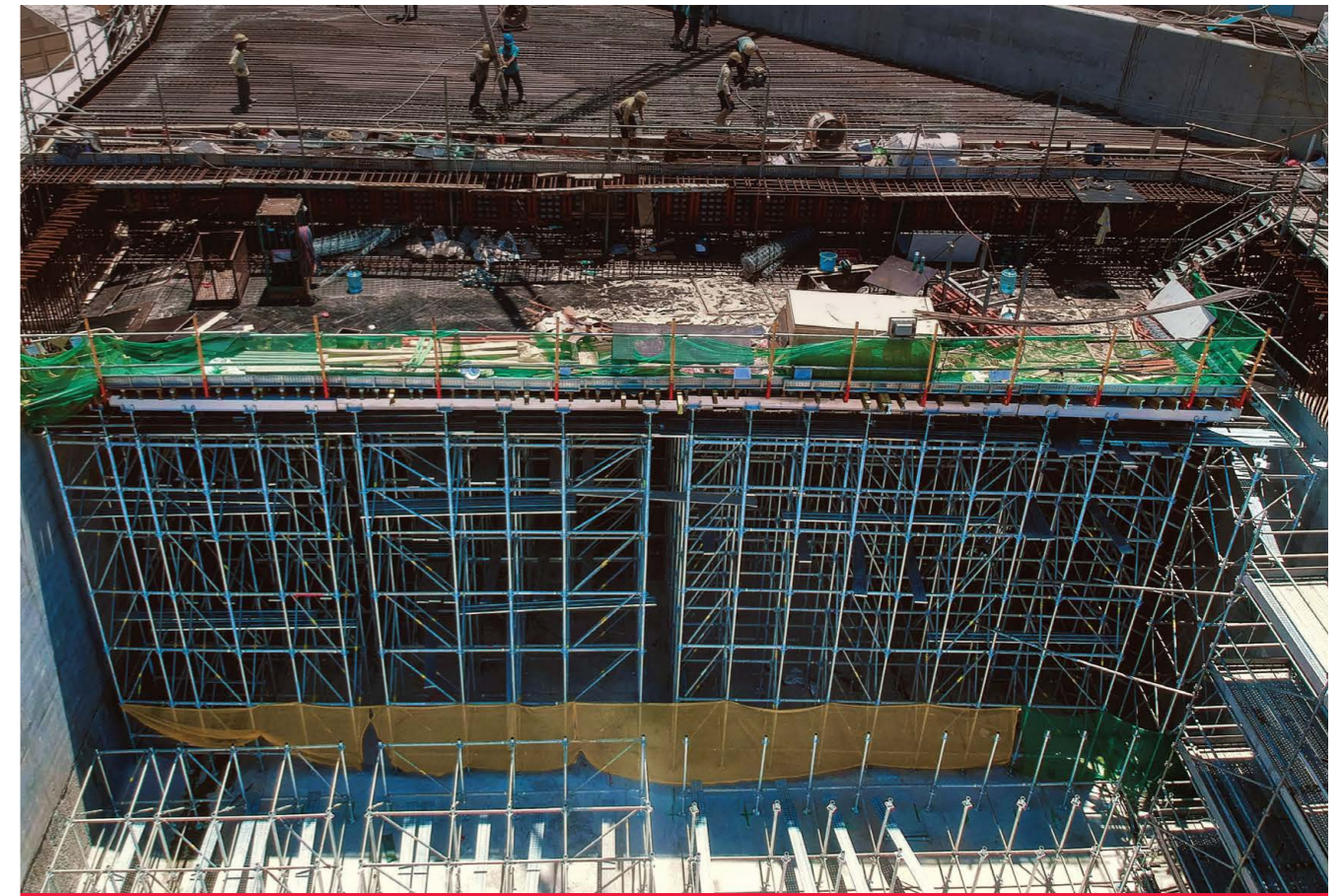
HKIA T2 Expansion, Hong Kong



Kai Tak Sports Park, Hong Kong



TKOLTT Landscape Deck, Hong Kong

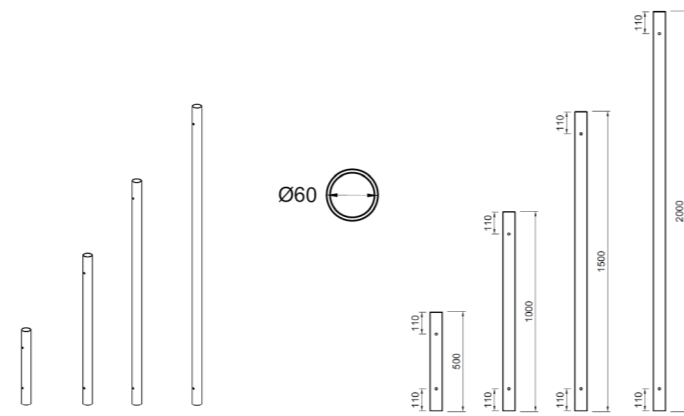


Central Kowloon Route, Hong Kong

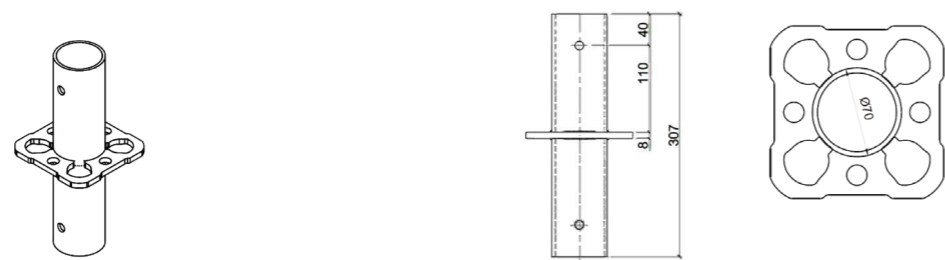
PERI UP MD

Component Catalogue

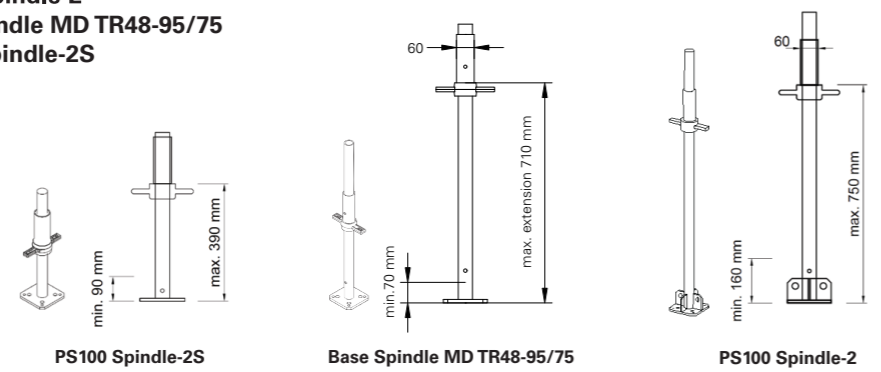
Item no.	Weight kg	
140190, 200502	2.73	Vertical MD 50
140192, 200503	5.50	Vertical MD 100
140194, 200504	8.27	Vertical MD 150
140196, 201046	11.10	Vertical MD 200



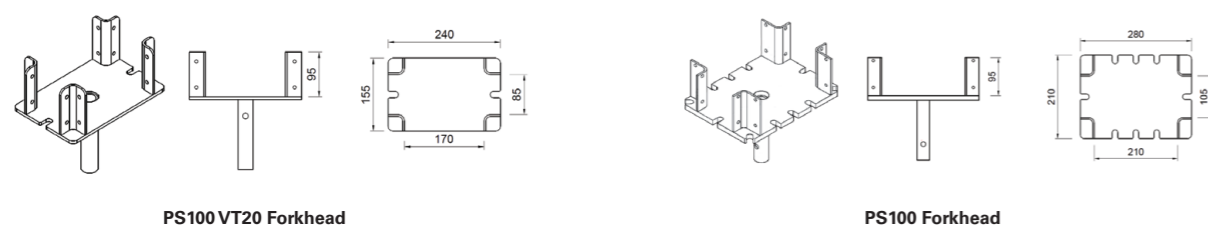
Item no.	Weight kg	
140200	2.59	Rosett Connector MD



Item no.	Weight kg	
200534	11.05	PS100 Spindle-2
140331	9.68	Base Spindle MD TR48-95/75
201069	7.61	PS100 Spindle-2S

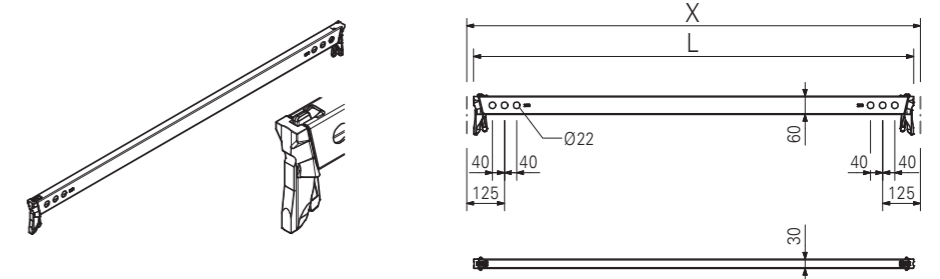


Item no.	Weight kg		
200511	7.01	PS100 Forkhead	For single or double AB225
201070	2.81	PS100 VT20 Forkhead	For single of double VT20 Girder



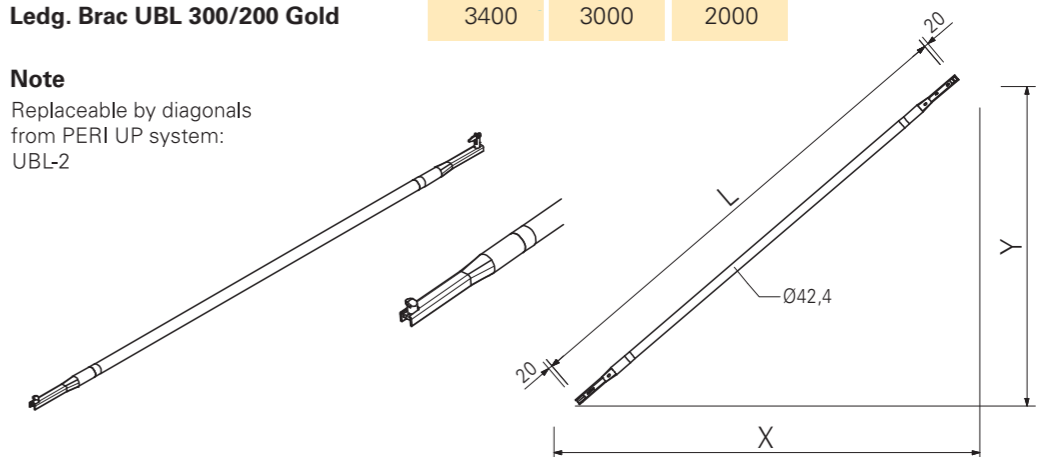
Item no.	Weight kg		L [mm]	X [mm]
114613	1.43	Ledger UH 25 Plus	204	250
114595	2.08	Ledger UH 50 Plus	454	500
114629	2.74	Ledger UH 75 Plus	704	750
114632	4.47	Ledger UH 100 Plus	954	1000
114641	4.72	Ledger UH 150 Plus	1454	1500
114645	6.05	Ledger UH 200 Plus	1954	2000
114648	7.37	Ledger UH 250 Plus	2454	2500
114651	8.69	Ledger UH 300 Plus	2954	3000

Note
Replaceable by ledgers from PERI UP system: UH-2



			L [mm]	X [mm]	Y [mm]
115513	4.64	Ledg. Brac UBL 100/150 Brown	1677	1000	1500
100055	4.44	Ledg. Brac UBL 150/100 White	1601	1500	1000
102846	5.34	Ledg. Brac UBL 150/150 D/Blue	1953	1500	1500
100057	6.38	Ledg. Brac UBL 150/200 Red	2358	1500	2000
100059	5.50	Ledg. Brac UBL 200/100 Black	2016	2000	1000
102862	6.24	Ledg. Brac UBL 200/150 Purple	2305	2000	1500
100061	7.16	Ledg. Brac UBL 200/200 L/Green	2658	2000	2000
100063	6.64	Ledg. Brac UBL 250/100	2462	2500	1000
102861	7.26	Ledg. Brac UBL 250/150 Yellow	2705	2500	1500
100065	8.05	Ledg. Brac UBL 250/200 D/Green	3010	2500	2000
100067	7.83	Ledg. Brac UBL 300/100 Chestnut	2926	3000	1000
104766	8.36	Ledg. Brac UBL 300/150 Pink	3133	3000	1500
100069	9.05	Ledg. Brac UBL 300/200 Gold	3400	3000	2000

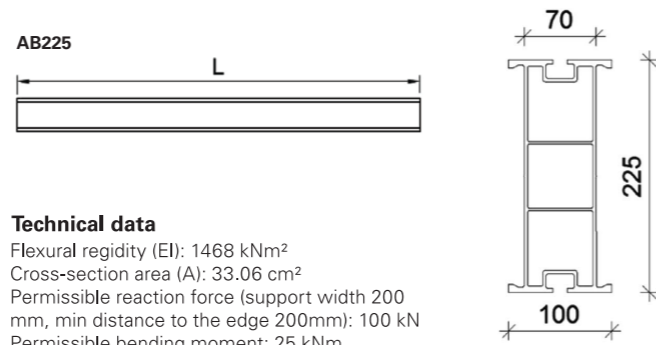
Note
Replaceable by diagonals from PERI UP system: UBL-2



PERI UP MD

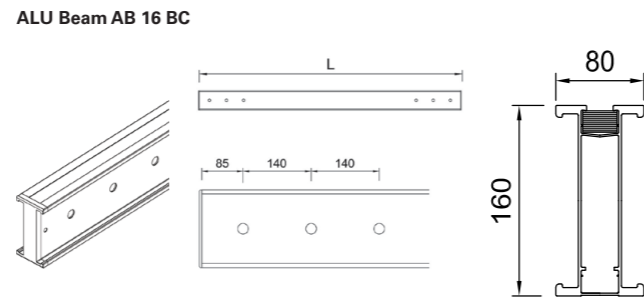
Component Catalogue

Item no.	Weight kg	
200716	15.10	AB225 1800
200717	20.10	AB225 2400
200718	34.58	AB225 4200
200719	25.20	AB225 3000
200720	30.20	AB225 3600
200721	40.30	AB225 4800
200722	45.30	AB225 5400
200723	48.58	AB225 5900



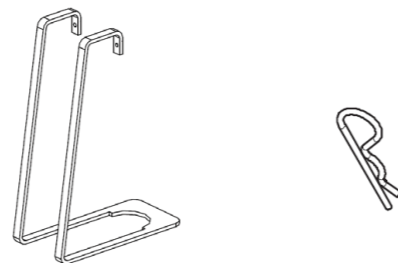
Technical data
 Flexural rigidity (EI): 1468 kNm²
 Cross-section area (A): 33.06 cm²
 Permissible reaction force (support width 200 mm, min distance to the edge 200mm): 100 kN
 Permissible bending moment: 25 kNm
 Permissible shear force: 69 kN
 Weight: 8.2 kg/m

39177	7.16	ALU Beam AB 16 BC, 150
39179	10.02	ALU Beam AB 16 BC, 210
39180	11.45	ALU Beam AB 16 BC, 240
39182	14.31	ALU Beam AB 16 BC, 300
39184	17.17	ALU Beam AB 16 BC, 360
39187	21.47	ALU Beam AB 16 BC, 450
39192	28.62	ALU Beam AB 16 BC, 600



100719	0.060	Hex Bolt ISO 4014 M10x70- 8.8 (with nut) M10x70 - tension connection between Forkhead and Spindle
--------	-------	---

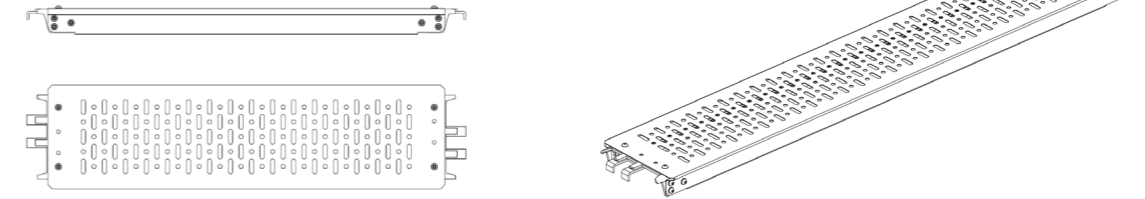
200848	0.368	Spindle Safety Strap Cotter Pin 4/1 To prevent spindles from failing out during moving with a crane. Allows spindle rotation.
018060	0.010	



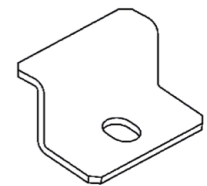
Item no.	Weight kg	
201335	4.16	PS100 Deck 500 -2
201336	5.26	PS100 Deck 750 -2
201337	6.52	PS100 Deck 1000 -2
201338	8.72	PS100 Deck 1500 -2
201339	10.92	PS100 Deck 2000 -2
201340	12.92	PS100 Deck 2500 -2
201341	15.32	PS100 Deck 3000 -2

Note
 Mounted on RHS 60x30 (PS100 Ledgers / UH / UH-2)
 Suitable for PS100 / PERI UP MD and PERI UP
 One side can be adjusted 22 mm.
 The red mark at the top indicates the position for PS100.
 Width: 245 mm

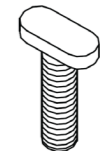
Technical data
 Permissible distributed load: 2 kN/m²
 Load Class 3 according to EN 12811-1, table 3



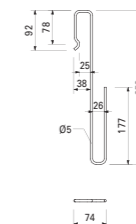
200378	AB225-VT20 Clamp
--------	-------------------------



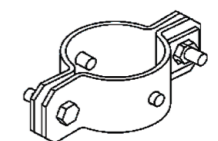
200770	0.100	T-Bolt M12x45-8.8
710330	0.017	Hex Nut ISO4032 M12-8 For connection of different accessories to AB225



141150	Spindle Safety Strap MD
--------	--------------------------------



141150	E-Clip MD
--------	------------------



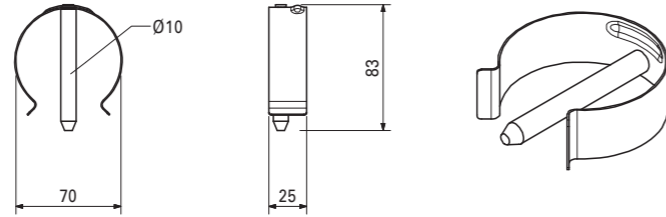
PERI UP MD

Component Catalogue

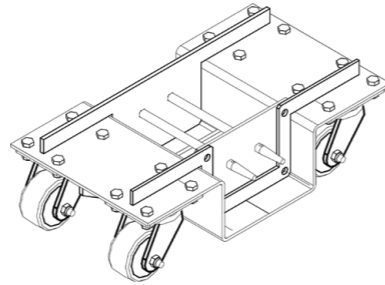
Item no.

140221 Locking Pin MD Ø70mm**Notes**

As tension-proof connection of
verticals with connector.

**218115 Slab Table Trolley****Notes**

Permissible load: 1.6t





Formwork Scaffolding Engineering www.periasia.com

